

# Flow Studies

Each line should be done in one breath, making the phrase use the whole breath. Evenness of sound and timbre should be maintained at all times.

## Study #1

Study #1, measure 1-4. Bass clef, key signature of two flats (Bb, Eb). The melody consists of quarter notes: G2, F2, E2, D2, C2, B1, A1. A fermata is placed over the final note A1.

*pp* *ff* *pp*

5

Study #1, measure 5-8. Bass clef, key signature of two sharps (F#, C#). The melody consists of quarter notes: G2, F#2, E2, D2, C2, B1, A1. A fermata is placed over the final note A1.

*pp* *ff* *pp*

9

Study #1, measure 9-12. Bass clef, key signature of three flats (Bbb, Ebb, Ab). The melody consists of quarter notes: G2, F2, E2, D2, C2, B1, A1. A fermata is placed over the final note A1.

*pp* *ff* *pp*

13

Study #1, measure 13-16. Bass clef, key signature of one sharp (F#). The melody consists of quarter notes: G2, F#2, E2, D2, C2, B1, A1. A fermata is placed over the final note A1.

*pp* *ff* *pp*

17

Study #1, measure 17-20. Bass clef, key signature of three sharps (F#, C#, G#). The melody consists of quarter notes: G2, F#2, E2, D2, C2, B1, A1. A fermata is placed over the final note A1.

*pp* *ff* *pp*

21

Study #1, measure 21-24. Bass clef, key signature of two flats (Bb, Eb). The melody consists of quarter notes: G2, F2, E2, D2, C2, B1, A1. A fermata is placed over the final note A1.

*pp* *ff* *pp*

25

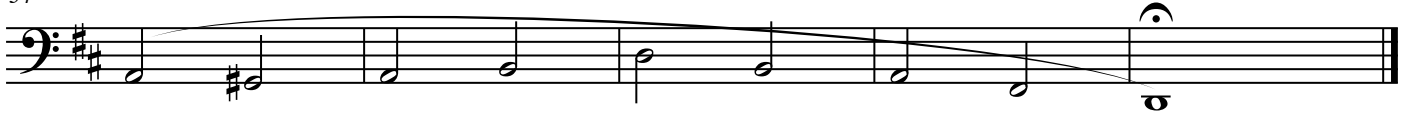
Study #1, measure 25-28. Bass clef, key signature of two sharps (F#, C#). The melody consists of quarter notes: G2, F#2, E2, D2, C2, B1, A1. A fermata is placed over the final note A1.

*pp* *ff* *pp*



*pp* ————— *ff* ————— *pp*

34



*pp* ————— *ff* ————— *pp*

39



*pp* ————— *ff* ————— *pp*

44



*pp* ————— *ff* ————— *pp*

49



*pp* ————— *ff* ————— *pp*

54



*pp* ————— *ff* ————— *pp*

59



*pp* ————— *ff* ————— *pp*

Study #3

Flow Studies

64



*pp* ————— *ff* ————— *pp*

70



*pp* ————— *ff* ————— *pp*

76



*pp* ————— *ff* ————— *pp*

82



*pp* ————— *ff* ————— *pp*

88



*pp* ————— *ff* ————— *pp*

94



*pp* ————— *ff* ————— *pp*

100



*pp* ————— *ff* ————— *pp*

Study #4

Flow Studies

106



*pp* ————— *ff* ————— *pp*

112



*pp* ————— *ff* ————— *pp*

118



*pp* ————— *ff* ————— *pp*

124



*pp* ————— *ff* ————— *pp*

130



*pp* ————— *ff* ————— *pp*

136



*pp* ————— *ff* ————— *pp*

142



*pp* ————— *ff* ————— *pp*

Study #5

Flow Studies

148



*pp* ————— *ff* ————— *pp*

155



*pp* ————— *ff* ————— *pp*

162



*pp* ————— *ff* ————— *pp*

169



*pp* ————— *ff* ————— *pp*

176



*pp* ————— *ff* ————— *pp*

183



*pp* ————— *ff* ————— *pp*

190



*mf* ————— *ff* ————— *mf*

Study #6

Flow Studies

197



*pp* ————— *ff* ————— *pp*

205



*pp* ————— *ff* ————— *pp*

213



*pp* ————— *ff* ————— *pp*

221



*pp* ————— *ff* ————— *pp*

229



*pp* ————— *ff* ————— *pp*

237



*pp* ————— *ff* ————— *pp*

245



*pp* ————— *ff* ————— *pp*

Study #7

Flow Studies

253

*pp* ————— *ff* ————— *pp*

262

*pp* ————— *ff* ————— *pp*

271

*pp* ————— *ff* ————— *pp*

280

*pp* ————— *ff* ————— *pp*

289

*pp* ————— *ff* ————— *pp*

298

*pp* ————— *ff* ————— *pp*

307

*pp* ————— *ff* ————— *pp*

Study #8

Flow Studies

316



*pp* ————— *ff* ————— *pp*

325



*pp* ————— *ff* ————— *pp*

334



*pp* ————— *ff* ————— *pp*

343



*pp* ————— *ff* ————— *pp*

352



*pp* ————— *ff* ————— *pp*

361



*pp* ————— *ff* ————— *pp*

370



*pp* ————— *ff* ————— *pp*



Study #9

Flow Studies

379



*pp* ————— *ff* ————— *pp*

389



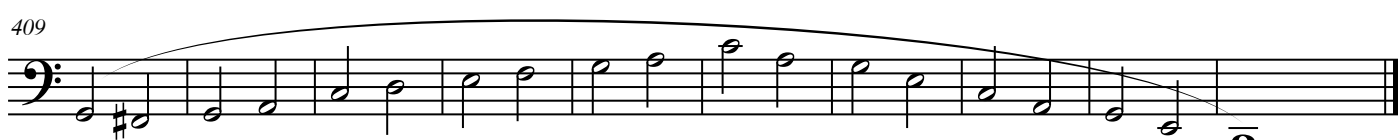
*pp* ————— *ff* ————— *pp*

399



*pp* ————— *ff* ————— *pp*

409



*pp* ————— *ff* ————— *pp*

419



*pp* ————— *ff* ————— *pp*

429



*pp* ————— *ff* ————— *pp*

439



*pp* ————— *ff* ————— *pp*

Study #10

Flow Studies

449

A single musical staff in bass clef with a key signature of two flats (B-flat and E-flat). The staff contains a sequence of notes: G2, A2, B-flat2, C3, D3, E-flat3, F3, G3, A3, B-flat3, C4, D4, E-flat4, F4, G4, A4, B-flat4, C5, D5, E-flat5, F5, G5, A5, B-flat5, C6, D6, E-flat6, F6, G6, A6, B-flat6, C7, D7, E-flat7, F7, G7, A7, B-flat7, C8. A long slur covers the entire staff.

*pp* ————— *ff* ————— *pp*

460

A single musical staff in bass clef with a key signature of one sharp (F#). The staff contains a sequence of notes: G2, A2, B2, C3, D3, E3, F#3, G3, A3, B3, C4, D4, E4, F#4, G4, A4, B4, C5, D5, E5, F#5, G5, A5, B5, C6, D6, E6, F#6, G6, A6, B6, C7, D7, E7, F#7, G7, A7, B7, C8. A long slur covers the entire staff.

*pp* ————— *ff* ————— *pp*

471

A single musical staff in bass clef with a key signature of two flats (B-flat and E-flat). The staff contains a sequence of notes: G2, A2, B-flat2, C3, D3, E-flat3, F3, G3, A3, B-flat3, C4, D4, E-flat4, F4, G4, A4, B-flat4, C5, D5, E-flat5, F5, G5, A5, B-flat5, C6, D6, E-flat6, F6, G6, A6, B-flat6, C7, D7, E-flat7, F7, G7, A7, B-flat7, C8. A long slur covers the entire staff.

*pp* ————— *ff* ————— *pp*

482

A single musical staff in bass clef with a key signature of one sharp (F#). The staff contains a sequence of notes: G2, A2, B2, C3, D3, E3, F#3, G3, A3, B3, C4, D4, E4, F#4, G4, A4, B4, C5, D5, E5, F#5, G5, A5, B5, C6, D6, E6, F#6, G6, A6, B6, C7, D7, E7, F#7, G7, A7, B7, C8. A long slur covers the entire staff.

*pp* ————— *ff* ————— *pp*

493

A single musical staff in bass clef with a key signature of three flats (B-flat, E-flat, and A-flat). The staff contains a sequence of notes: G2, A2, B-flat2, C3, D3, E-flat3, F3, G3, A3, B-flat3, C4, D4, E-flat4, F4, G4, A4, B-flat4, C5, D5, E-flat5, F5, G5, A5, B-flat5, C6, D6, E-flat6, F6, G6, A6, B-flat6, C7, D7, E-flat7, F7, G7, A7, B-flat7, C8. A long slur covers the entire staff.

*pp* ————— *ff* ————— *pp*

504

A single musical staff in bass clef with a key signature of two flats (B-flat and E-flat). The staff contains a sequence of notes: G2, A2, B-flat2, C3, D3, E-flat3, F3, G3, A3, B-flat3, C4, D4, E-flat4, F4, G4, A4, B-flat4, C5, D5, E-flat5, F5, G5, A5, B-flat5, C6, D6, E-flat6, F6, G6, A6, B-flat6, C7, D7, E-flat7, F7, G7, A7, B-flat7, C8. A long slur covers the entire staff.

*pp* ————— *ff* ————— *pp*

515

A single musical staff in bass clef with a key signature of two sharps (F# and C#). The staff contains a sequence of notes: G2, A2, B2, C3, D3, E3, F#3, G3, A3, B3, C4, D4, E4, F#4, G4, A4, B4, C5, D5, E5, F#5, G5, A5, B5, C6, D6, E6, F#6, G6, A6, B6, C7, D7, E7, F#7, G7, A7, B7, C8. A long slur covers the entire staff.

*pp* ————— *ff* ————— *pp*