

*pp* ————— *ff* ————— *pp*

34



*pp* ————— *ff* ————— *pp*

39



*pp* ————— *ff* ————— *pp*

44



*pp* ————— *ff* ————— *pp*

49



*pp* ————— *ff* ————— *pp*

54



*pp* ————— *ff* ————— *pp*

59



*pp* ————— *ff* ————— *pp*

Study #3

Flow Studies

64



*pp* ————— *ff* ————— *pp*

70



*pp* ————— *ff* ————— *pp*

76



*pp* ————— *ff* ————— *pp*

82



*pp* ————— *ff* ————— *pp*

88



*pp* ————— *ff* ————— *pp*

94



*pp* ————— *ff* ————— *pp*

100



*pp* ————— *ff* ————— *pp*

Study #4

Flow Studies

106



*pp* ————— *ff* ————— *pp*

112



*pp* ————— *ff* ————— *pp*

118



*pp* ————— *ff* ————— *pp*

124



*pp* ————— *ff* ————— *pp*

130



*pp* ————— *ff* ————— *pp*

136



*pp* ————— *ff* ————— *pp*

142



*pp* ————— *ff* ————— *pp*

Study #5

Flow Studies

148



*pp* ————— *ff* ————— *pp*

155



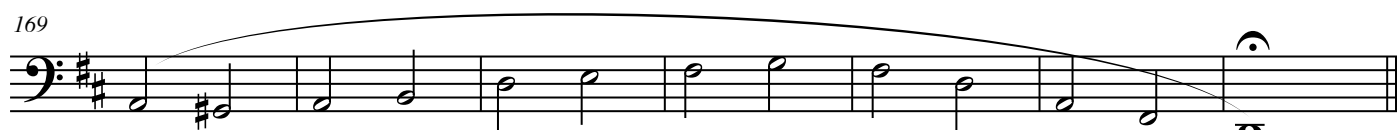
*pp* ————— *ff* ————— *pp*

162



*pp* ————— *ff* ————— *pp*

169



*pp* ————— *ff* ————— *pp*

176



*pp* ————— *ff* ————— *pp*

183



*pp* ————— *ff* ————— *pp*

190

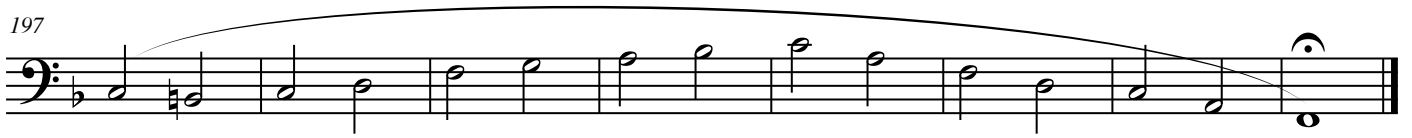


*mm* ————— *ff* ————— *mm*

Study #6

Flow Studies

197



*pp* ————— *ff* ————— *pp*

205



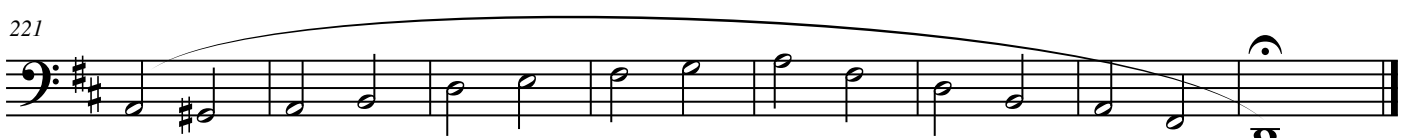
*pp* ————— *ff* ————— *pp*

213



*pp* ————— *ff* ————— *pp*

221



*pp* ————— *ff* ————— *pp*

229



*pp* ————— *ff* ————— *pp*

237



*pp* ————— *ff* ————— *pp*

245



*pp* ————— *ff* ————— *pp*

Study #7

Flow Studies

253



*pp* ————— *ff* ————— *pp*

262



*pp* ————— *ff* ————— *pp*

271



*pp* ————— *ff* ————— *pp*

280



*pp* ————— *ff* ————— *pp*

289



*pp* ————— *ff* ————— *pp*

298



*pp* ————— *ff* ————— *pp*

307



*pp* ————— *ff* ————— *pp*







Study #10

Flow Studies

449

A single musical staff in bass clef with a key signature of one flat (B-flat). The exercise consists of a continuous melodic line of quarter notes, starting on G2 and ascending stepwise to G4, then descending stepwise back to G2. A long slur covers the entire line. The piece ends with a fermata over the final G2 note.

*pp*

*ff*

*pp*

460

A single musical staff in bass clef with a key signature of two sharps (D major). The exercise consists of a continuous melodic line of quarter notes, starting on D2 and ascending stepwise to D4, then descending stepwise back to D2. A long slur covers the entire line. The piece ends with a fermata over the final D2 note.

*pp*

*ff*

*pp*

471

A single musical staff in bass clef with a key signature of one flat (B-flat). The exercise consists of a continuous melodic line of quarter notes, starting on G2 and ascending stepwise to G4, then descending stepwise back to G2. A long slur covers the entire line. The piece ends with a fermata over the final G2 note.

*pp*

*ff*

*pp*

482

A single musical staff in bass clef with a key signature of two sharps (D major). The exercise consists of a continuous melodic line of quarter notes, starting on D2 and ascending stepwise to D4, then descending stepwise back to D2. A long slur covers the entire line. The piece ends with a fermata over the final D2 note.

*pp*

*ff*

*pp*

493

A single musical staff in bass clef with a key signature of two flats (B-flat major). The exercise consists of a continuous melodic line of quarter notes, starting on B2 and ascending stepwise to B4, then descending stepwise back to B2. A long slur covers the entire line. The piece ends with a fermata over the final B2 note.

*pp*

*ff*

*pp*

504

A single musical staff in bass clef with a key signature of two sharps (D major). The exercise consists of a continuous melodic line of quarter notes, starting on D2 and ascending stepwise to D4, then descending stepwise back to D2. A long slur covers the entire line. The piece ends with a fermata over the final D2 note.

*pp*

*ff*

*pp*

515

A single musical staff in bass clef with a key signature of three flats (E-flat major). The exercise consists of a continuous melodic line of quarter notes, starting on E2 and ascending stepwise to E4, then descending stepwise back to E2. A long slur covers the entire line. The piece ends with a fermata over the final E2 note.

*pp*

*ff*

*pp*