

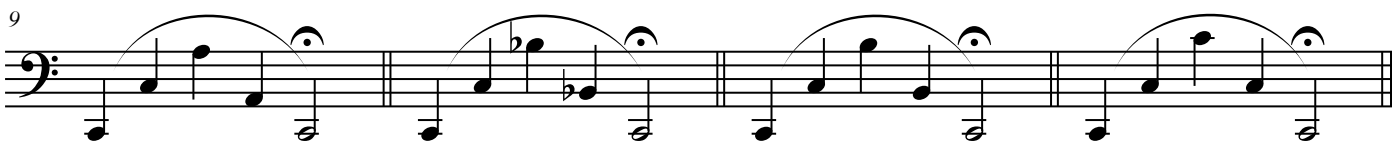
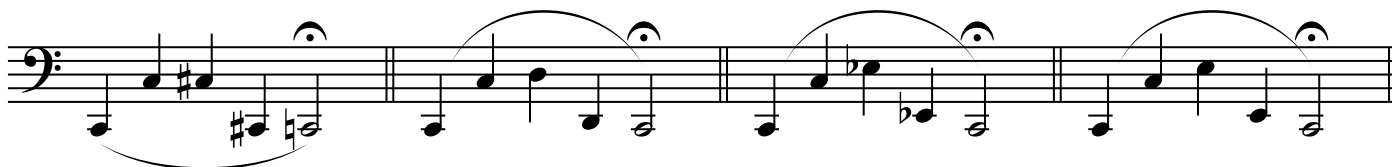
Tuba

# Range Extension Exercises 2

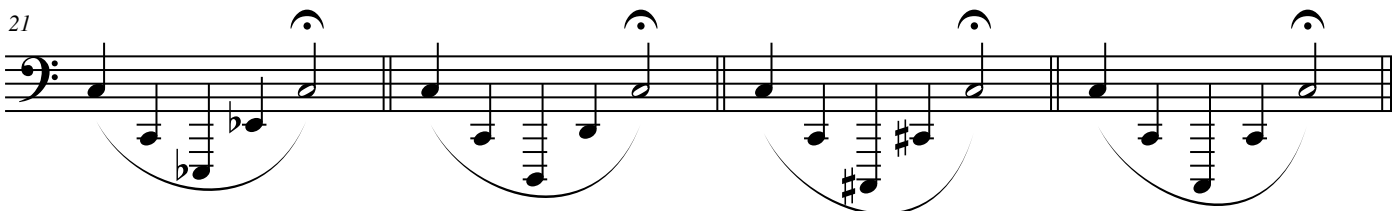
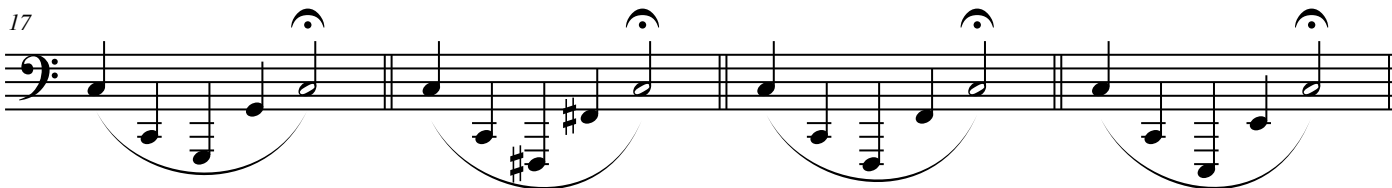
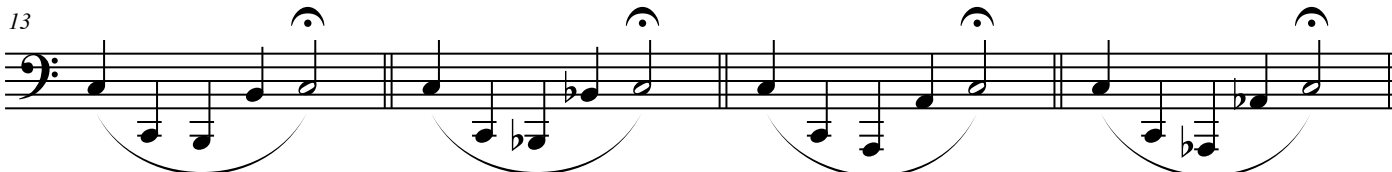
various/adapted Olt

Be sure to maintain an open air flow through all ranges. Go slowly, using one breath for each phrase. Center all pitches and strive for an even sound and timbre at all times.

## Exercise #1



## Exercise #2



### Exercise #3

25

Measures 25-28 of Exercise #3. The notation is in bass clef. Measure 25 starts with a whole note chord (F2, A2, C3) and a half note (F2). Measure 26 has a whole note chord (F2, A2, C3) and a half note (F2). Measure 27 has a whole note chord (F2, A2, C3) and a half note (F2). Measure 28 has a whole note chord (F2, A2, C3) and a half note (F2).

29

Measures 29-32 of Exercise #3. The notation is in bass clef. Measure 29 starts with a whole note chord (F2, A2, C3) and a half note (F2). Measure 30 has a whole note chord (F2, A2, C3) and a half note (F2). Measure 31 has a whole note chord (F2, A2, C3) and a half note (F2). Measure 32 has a whole note chord (F2, A2, C3) and a half note (F2).

33

Measures 33-36 of Exercise #3. The notation is in bass clef. Measure 33 starts with a whole note chord (F2, A2, C3) and a half note (F2). Measure 34 has a whole note chord (F2, A2, C3) and a half note (F2). Measure 35 has a whole note chord (F2, A2, C3) and a half note (F2). Measure 36 has a whole note chord (F2, A2, C3) and a half note (F2).

### Exercise #4

37

Measures 37-39 of Exercise #4. The notation is in bass clef. Measure 37 starts with a whole note chord (F2, A2, C3) and a half note (F2). Measure 38 has a whole note chord (F2, A2, C3) and a half note (F2). Measure 39 has a whole note chord (F2, A2, C3) and a half note (F2).

40

Measures 40-42 of Exercise #4. The notation is in bass clef. Measure 40 starts with a whole note chord (F2, A2, C3) and a half note (F2). Measure 41 has a whole note chord (F2, A2, C3) and a half note (F2). Measure 42 has a whole note chord (F2, A2, C3) and a half note (F2).

43

Measures 43-45 of Exercise #4. The notation is in bass clef. Measure 43 starts with a whole note chord (F2, A2, C3) and a half note (F2). Measure 44 has a whole note chord (F2, A2, C3) and a half note (F2). Measure 45 has a whole note chord (F2, A2, C3) and a half note (F2).

46

Measures 46-48 of Exercise #4. The notation is in bass clef. Measure 46 starts with a whole note chord (F2, A2, C3) and a half note (F2). Measure 47 has a whole note chord (F2, A2, C3) and a half note (F2). Measure 48 has a whole note chord (F2, A2, C3) and a half note (F2).

Exercise #5

49

Measures 49-51 of Exercise #5. The music is written in bass clef with a 3/4 time signature. It features a complex melodic line with many accidentals (sharps and flats) and a steady accompaniment of eighth notes in the lower register. The melody is grouped by a large slur, and each measure ends with a fermata.

52

Measures 52-54 of Exercise #5. The musical notation continues with the same complex melodic and accompanimental patterns as the previous system, maintaining the bass clef and 3/4 time signature.

55

Measures 55-57 of Exercise #5. The musical notation continues with the same complex melodic and accompanimental patterns as the previous system, maintaining the bass clef and 3/4 time signature.

58

Measures 58-60 of Exercise #5. The musical notation continues with the same complex melodic and accompanimental patterns as the previous system, maintaining the bass clef and 3/4 time signature.