

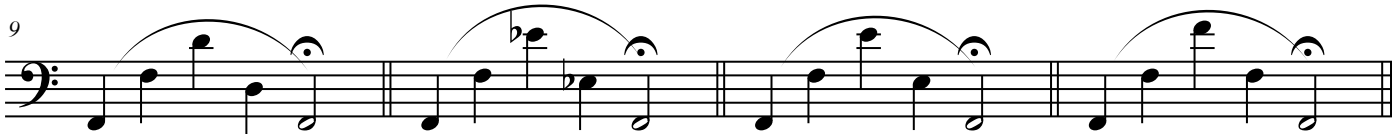
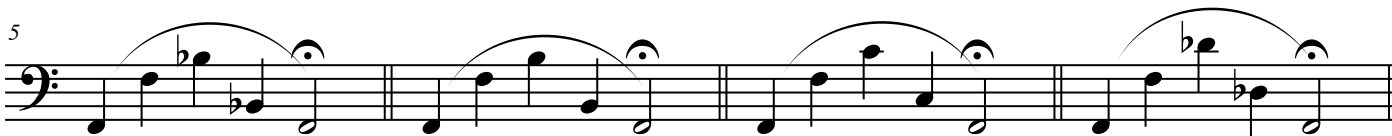
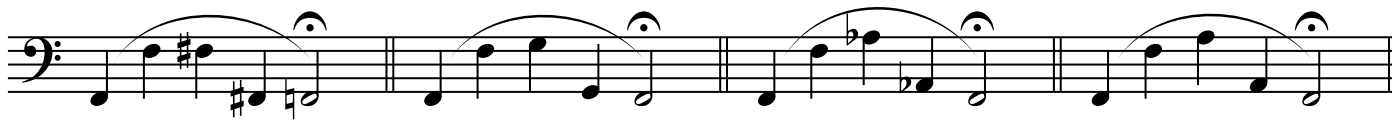
Tuba

Range Extension Exercises 2

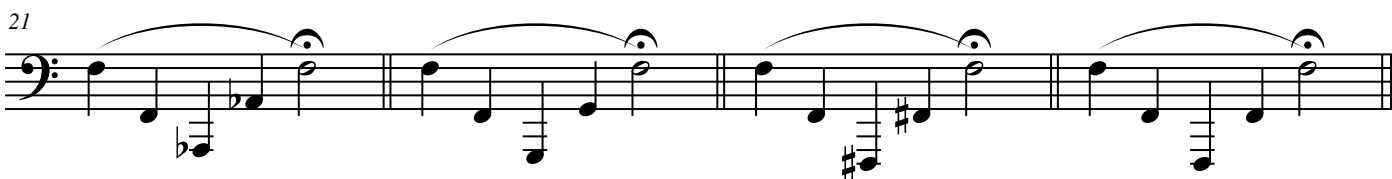
various/adapted Olt

Be sure to maintain an open air flow through all ranges. Go slowly, using one breath for each phrase.
Center all pitches and strive for an even sound and timbre at all times.

Exercise #1



Exercise #2



2

Exercise #3

25

Measures 25-28 of Exercise #3. The music is written in bass clef. Each measure contains a melodic line with a slur over the notes and a whole note chord below. Measure 25: G2, A2, B2 (sharp), C3. Measure 26: G2, A2, B2, C3. Measure 27: G2, A2, B2 (flat), C3. Measure 28: G2, A2, B2, C3.

29

Measures 29-32 of Exercise #3. The music is written in bass clef. Each measure contains a melodic line with a slur over the notes and a whole note chord below. Measure 29: G2, A2, B2 (flat), C3. Measure 30: G2, A2, B2, C3. Measure 31: G2, A2, B2, C3. Measure 32: G2, A2, B2 (flat), C3.

33

Measures 33-36 of Exercise #3. The music is written in bass clef. Each measure contains a melodic line with a slur over the notes and a whole note chord below. Measure 33: G2, A2, B2, C3. Measure 34: G2, A2, B2 (flat), C3. Measure 35: G2, A2, B2, C3. Measure 36: G2, A2, B2, C3.

Exercise #4

37

Measures 37-39 of Exercise #4. The music is written in bass clef. Each measure contains a melodic line with a slur over the notes and a whole note chord below. Measure 37: G2, A2, B2, C3 (sharp), D3. Measure 38: G2, A2, B2 (flat), C3, D3. Measure 39: G2, A2, B2, C3, D3 (sharp).

40

Measures 40-42 of Exercise #4. The music is written in bass clef. Each measure contains a melodic line with a slur over the notes and a whole note chord below. Measure 40: G2, A2, B2 (flat), C3, D3. Measure 41: G2, A2, B2, C3, D3 (sharp). Measure 42: G2, A2, B2, C3, D3.

43

Measures 43-45 of Exercise #4. The music is written in bass clef. Each measure contains a melodic line with a slur over the notes and a whole note chord below. Measure 43: G2, A2, B2 (flat), C3, D3. Measure 44: G2, A2, B2, C3, D3 (sharp). Measure 45: G2, A2, B2, C3, D3.

46

Measures 46-48 of Exercise #4. The music is written in bass clef. Each measure contains a melodic line with a slur over the notes and a whole note chord below. Measure 46: G2, A2, B2, C3, D3 (sharp). Measure 47: G2, A2, B2, C3, D3. Measure 48: G2, A2, B2, C3, D3.

Exercise #5

49

Measures 49-51 of Exercise #5. The notation is in bass clef with a key signature of one sharp (F#). Each measure contains a melodic line with slurs and a bass line with chords. Measure 49 starts with a bass line of F#2, G#2, A2, B2 and a melodic line of G#2, A2, B2, C3. Measure 50 starts with a bass line of G#2, A2, B2, C3 and a melodic line of A2, B2, C3, D3. Measure 51 starts with a bass line of A2, B2, C3, D3 and a melodic line of B2, C3, D3, E3.

52

Measures 52-54 of Exercise #5. The notation is in bass clef with a key signature of one sharp (F#). Each measure contains a melodic line with slurs and a bass line with chords. Measure 52 starts with a bass line of B2, C3, D3, E3 and a melodic line of D3, E3, F#3, G#3. Measure 53 starts with a bass line of C3, D3, E3, F#3 and a melodic line of E3, F#3, G#3, A3. Measure 54 starts with a bass line of D3, E3, F#3, G#3 and a melodic line of F#3, G#3, A3, B3.

55

Measures 55-57 of Exercise #5. The notation is in bass clef with a key signature of one sharp (F#). Each measure contains a melodic line with slurs and a bass line with chords. Measure 55 starts with a bass line of E3, F#3, G#3, A3 and a melodic line of G#3, A3, B3, C4. Measure 56 starts with a bass line of F#3, G#3, A3, B3 and a melodic line of A3, B3, C4, D4. Measure 57 starts with a bass line of G#3, A3, B3, C4 and a melodic line of B3, C4, D4, E4.

58

Measures 58-60 of Exercise #5. The notation is in bass clef with a key signature of one sharp (F#). Each measure contains a melodic line with slurs and a bass line with chords. Measure 58 starts with a bass line of A3, B3, C4, D4 and a melodic line of C4, D4, E4, F#4. Measure 59 starts with a bass line of B3, C4, D4, E4 and a melodic line of D4, E4, F#4, G#4. Measure 60 starts with a bass line of C4, D4, E4, F#4 and a melodic line of E4, F#4, G#4, A4.