

Range Extension Exercise

Take full breaths, keep flow as relaxed as possible, play as long phrases using minimal muscular motion in the face. Breath between slurs and only as needed. Strive for evenness of sound in all registers. Also repeat starting down octave at last exercise and working through in reverse order, proceeding lower.

B flat Major

f

7

13

19

B Major

23

f

29

35

41

Range Extension Exercise

C Major

45

First staff of music for C Major, measures 45-50. The key signature has one sharp (F#). The music is written in bass clef with a forte (*f*) dynamic. It features a series of eighth notes with slurs, ascending and then descending.

51

Second staff of music for C Major, measures 51-56. Continues the eighth-note pattern with slurs, ascending and then descending.

57

Third staff of music for C Major, measures 57-62. Continues the eighth-note pattern with slurs, ascending and then descending.

63

Fourth staff of music for C Major, measures 63-66. Continues the eighth-note pattern with slurs, ascending and then descending, ending with a double bar line.

D flat Major

67

Fifth staff of music for D flat Major, measures 67-72. The key signature has two flats (Bb, Eb). The music is written in bass clef with a forte (*f*) dynamic. It features a series of eighth notes with slurs, ascending and then descending.

73

Sixth staff of music for D flat Major, measures 73-78. Continues the eighth-note pattern with slurs, ascending and then descending.

79

Seventh staff of music for D flat Major, measures 79-84. Continues the eighth-note pattern with slurs, ascending and then descending.

85

Eighth staff of music for D flat Major, measures 85-88. Continues the eighth-note pattern with slurs, ascending and then descending, ending with a double bar line.

Range Extension Exercise

89 *D Major*

f

95

101

107

E flat Major

111

f

117

123

129

E Major

Range Extension Exercise

133

f

139

145

151

F Major

155

f

161

167

173

G flat Major

Range Extension Exercise

177



f

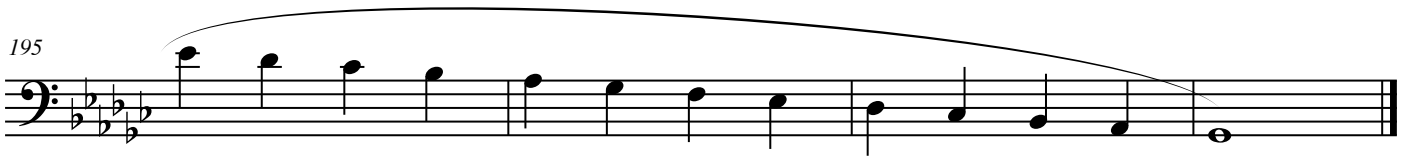
183



189



195



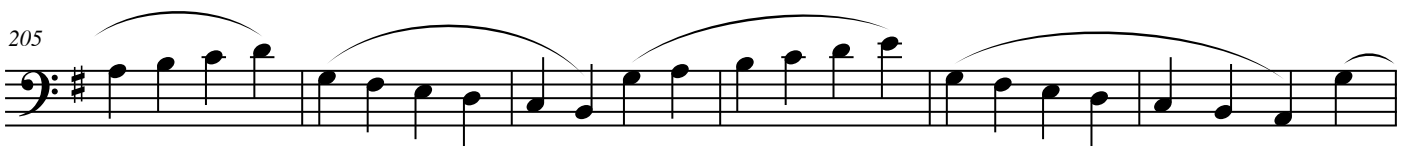
G Major

199

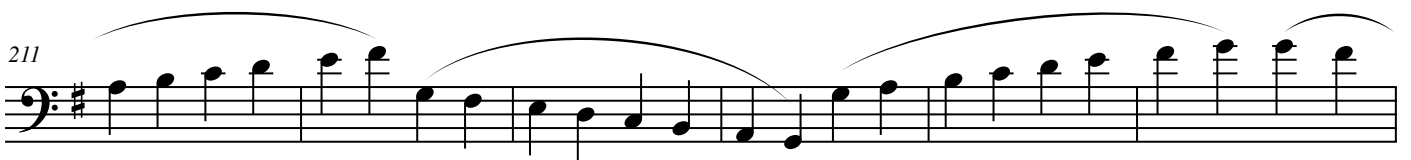


f

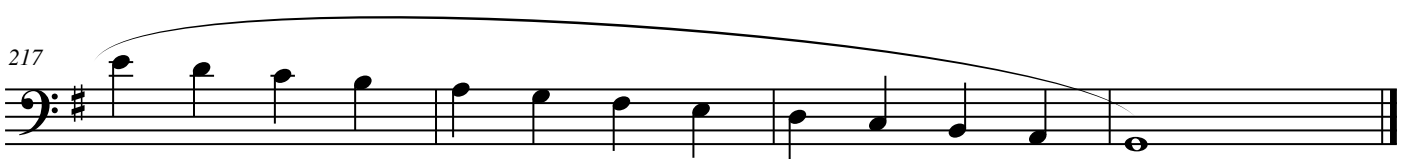
205



211



217



Range Extension Exercise

A flat Major

221



f

227



233



239



A Major

243



f

249



255



261

